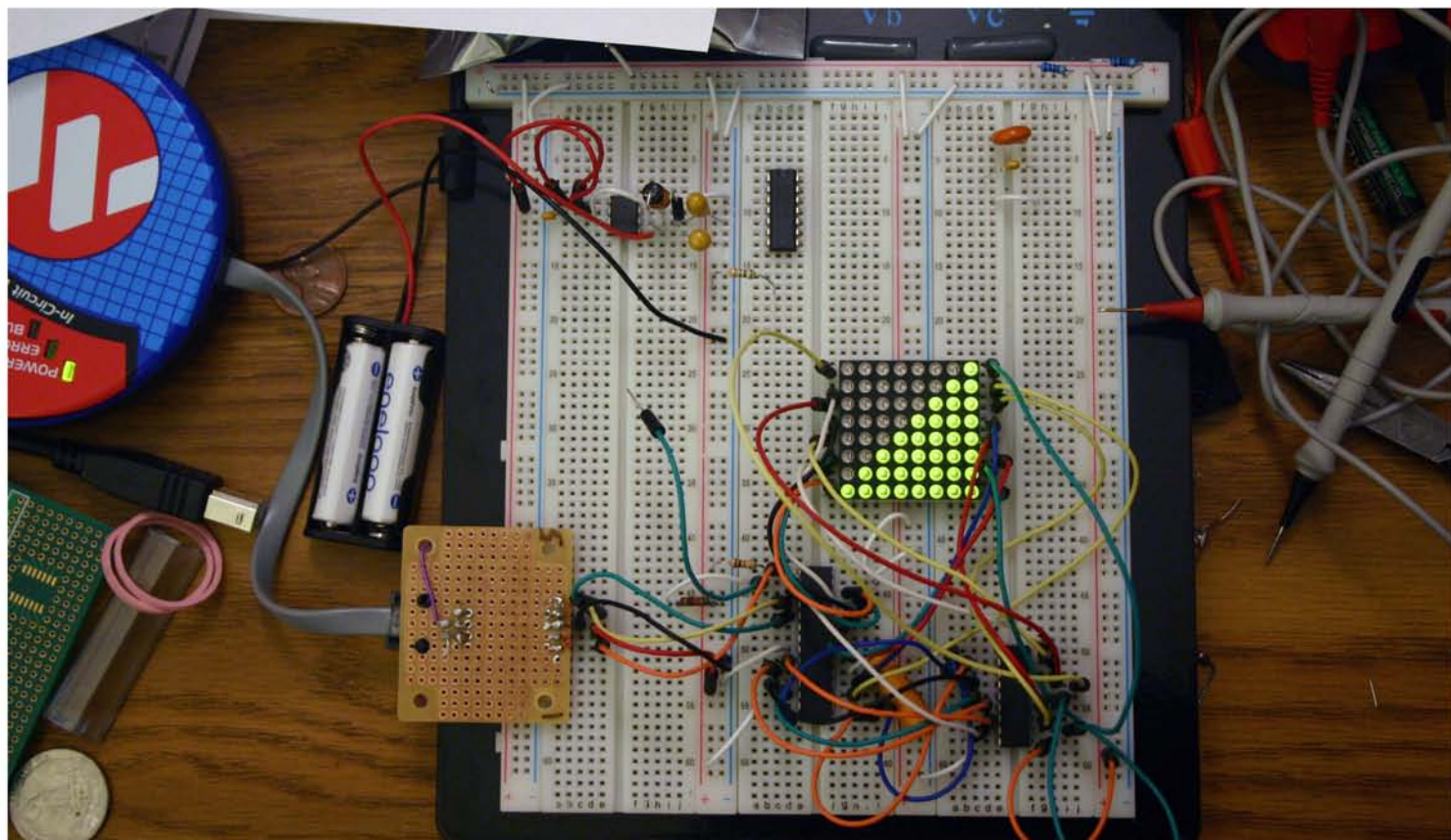


Design using Target CAD



Initial Prototype Breadboard

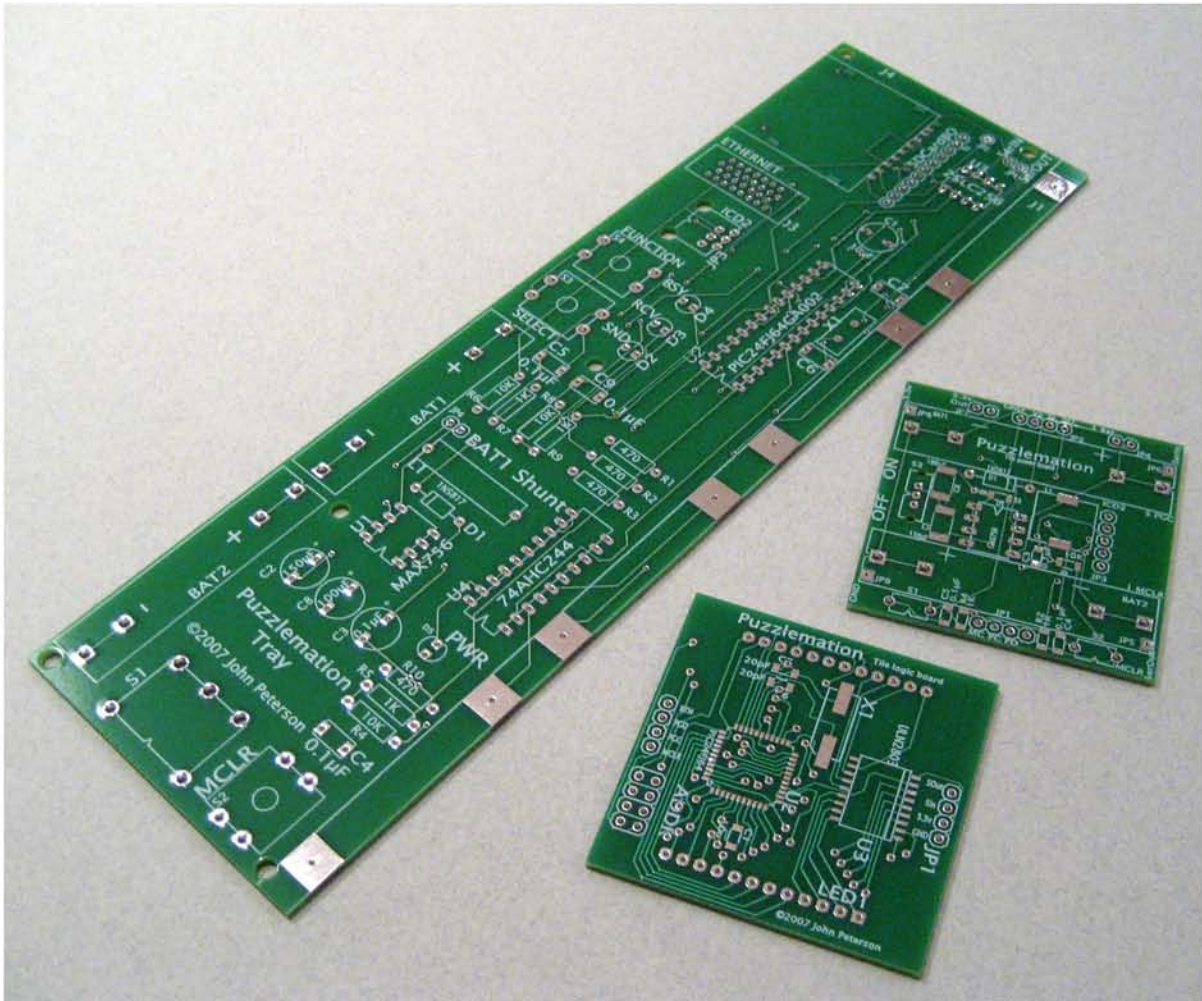
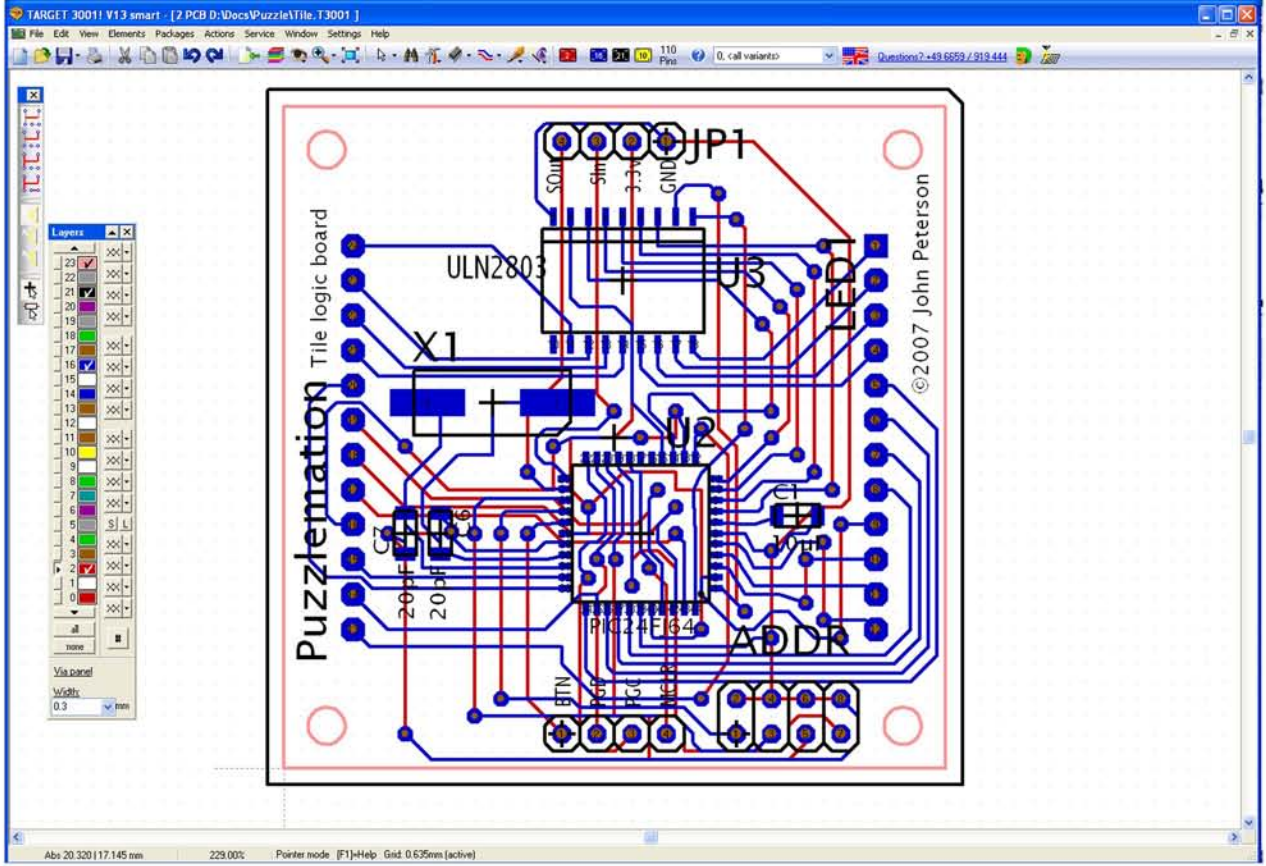


Where parts come from: The 2,500 page DigiKey catalog

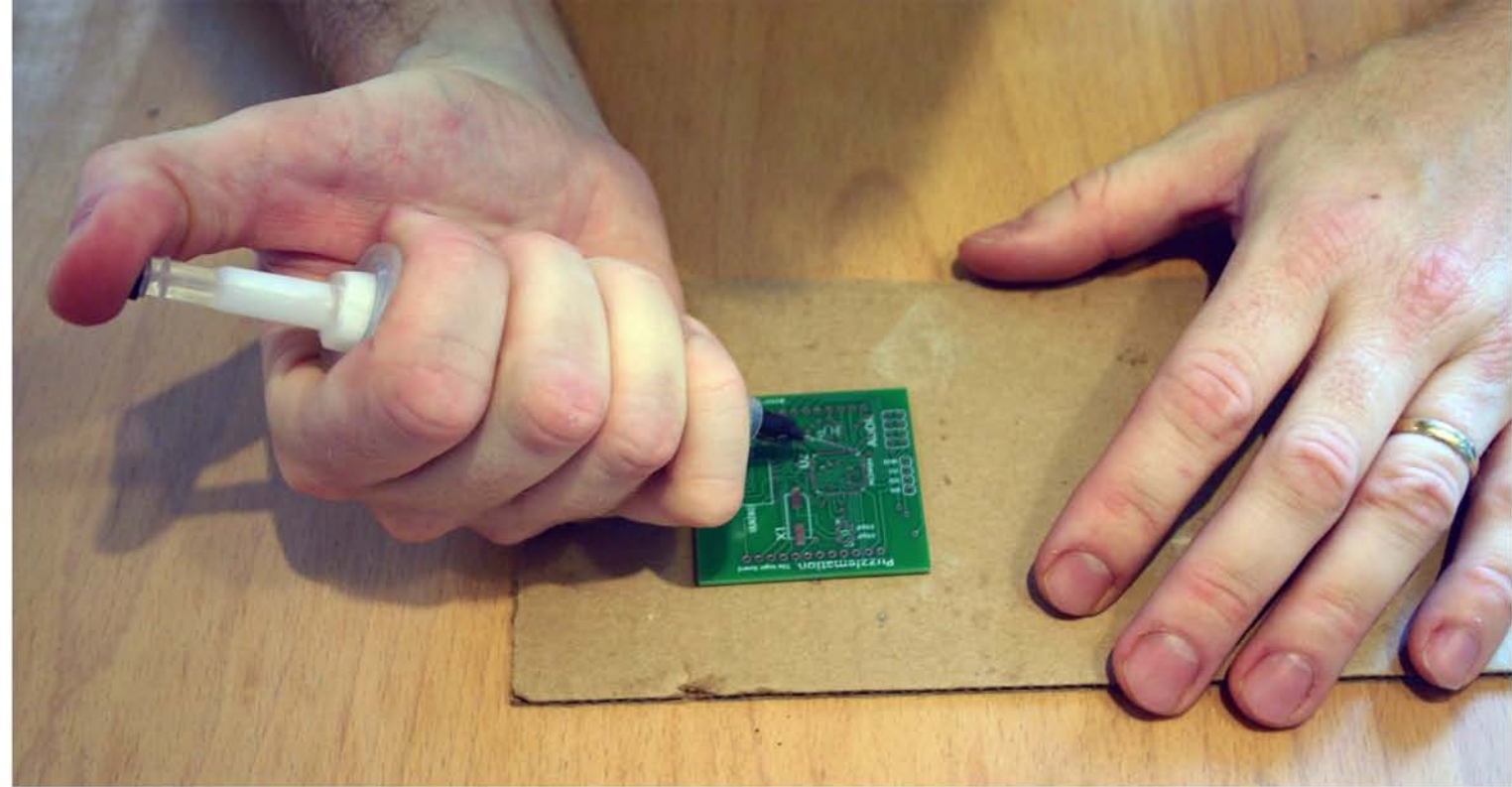


Sorting the tiny parts

Using TargetCAD to Design the PCB



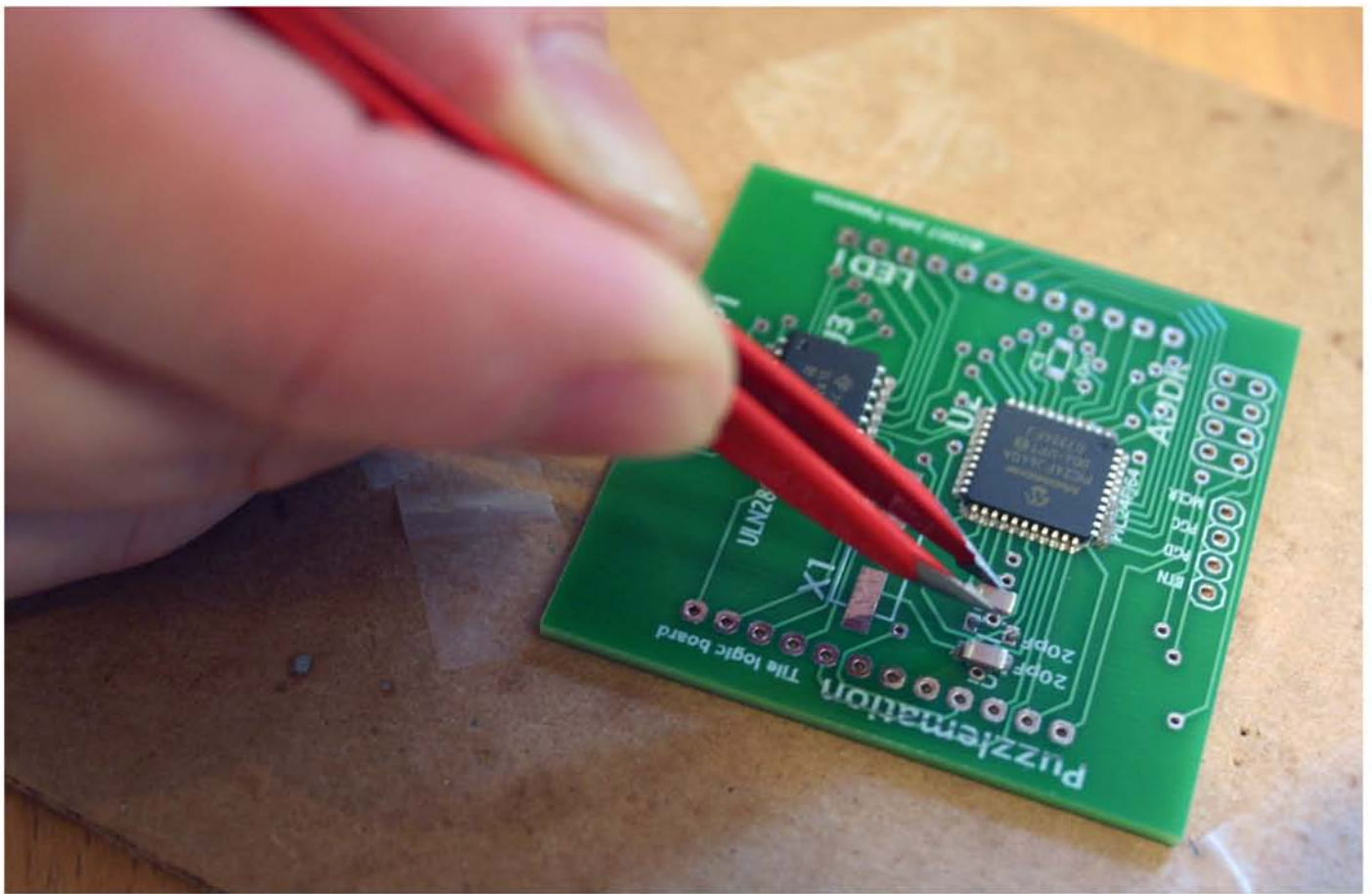
Finished boards back from fabrication



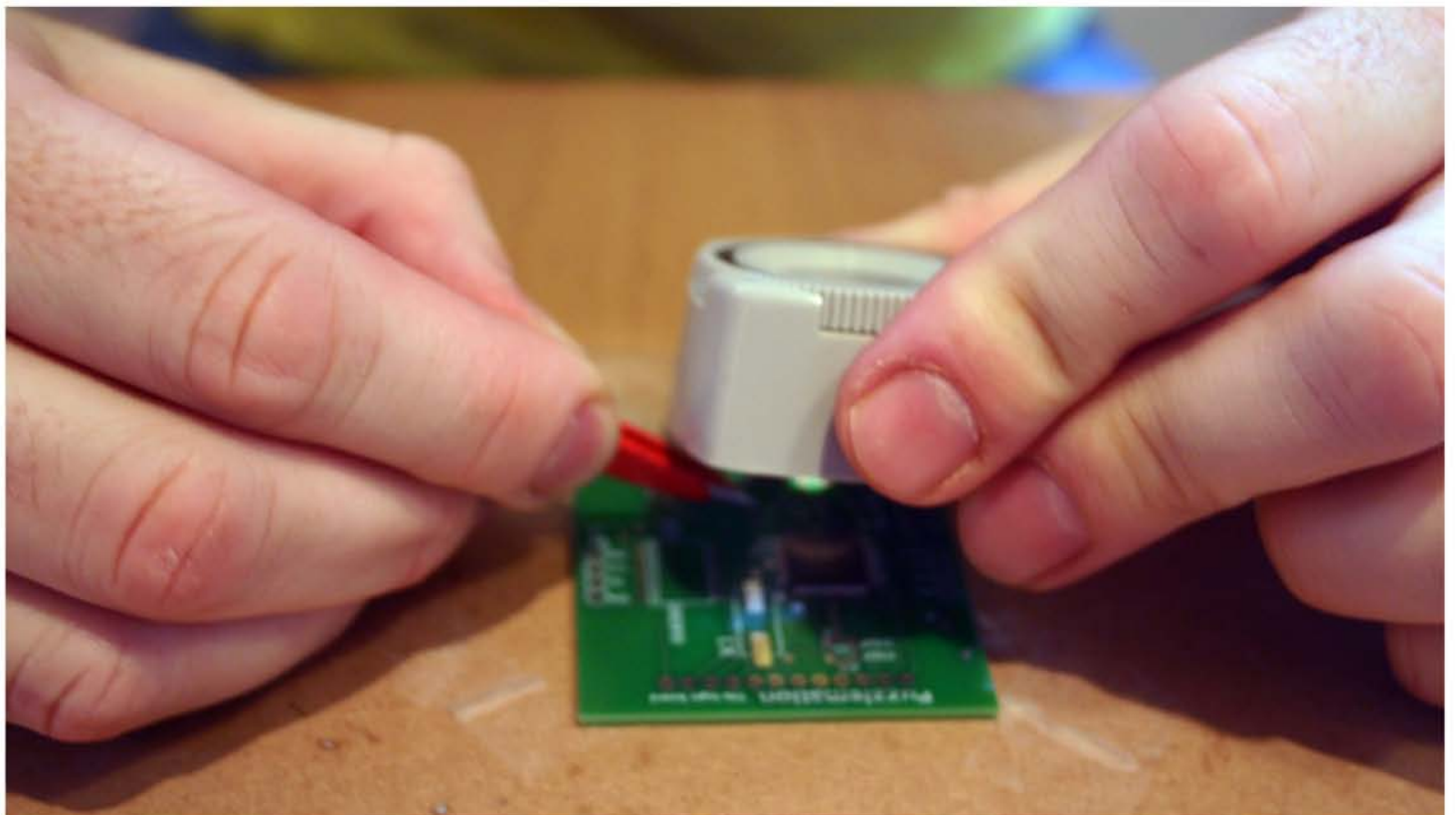
Applying solder paste for surface-mount components



Special tools for handling ICs

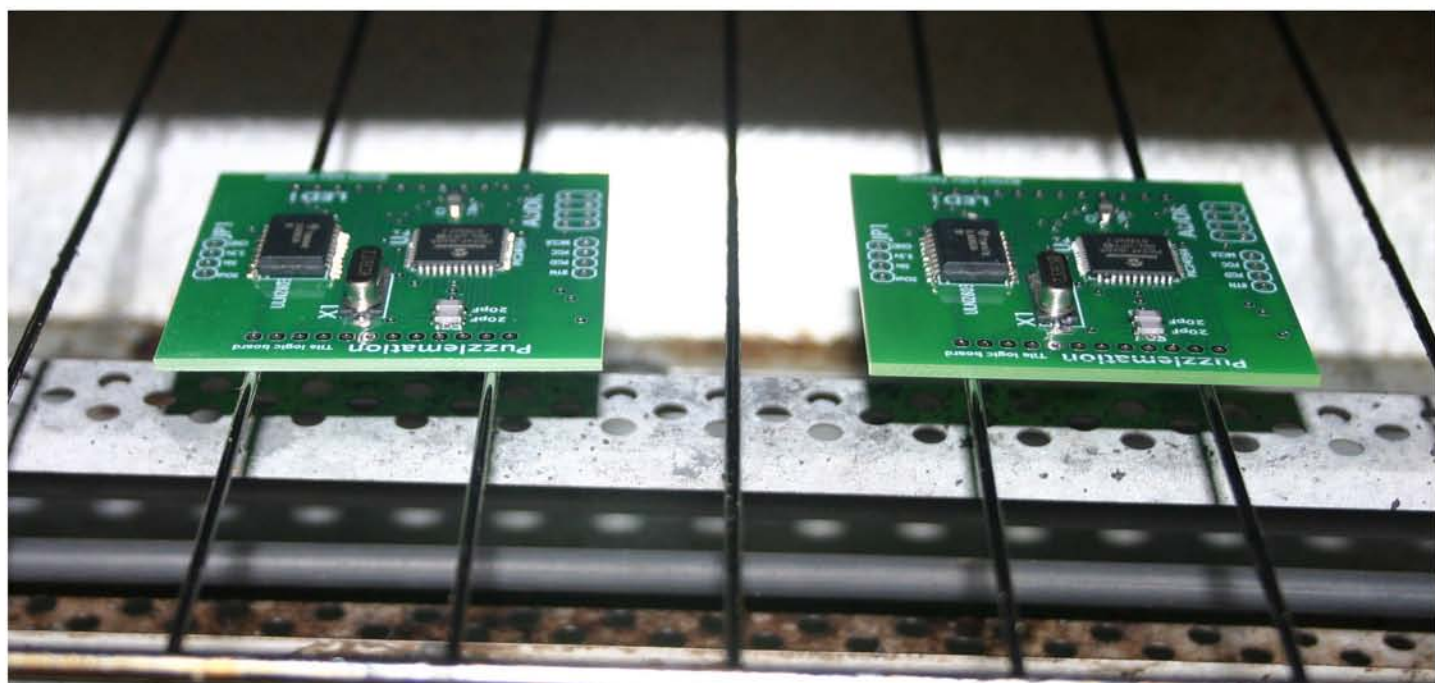


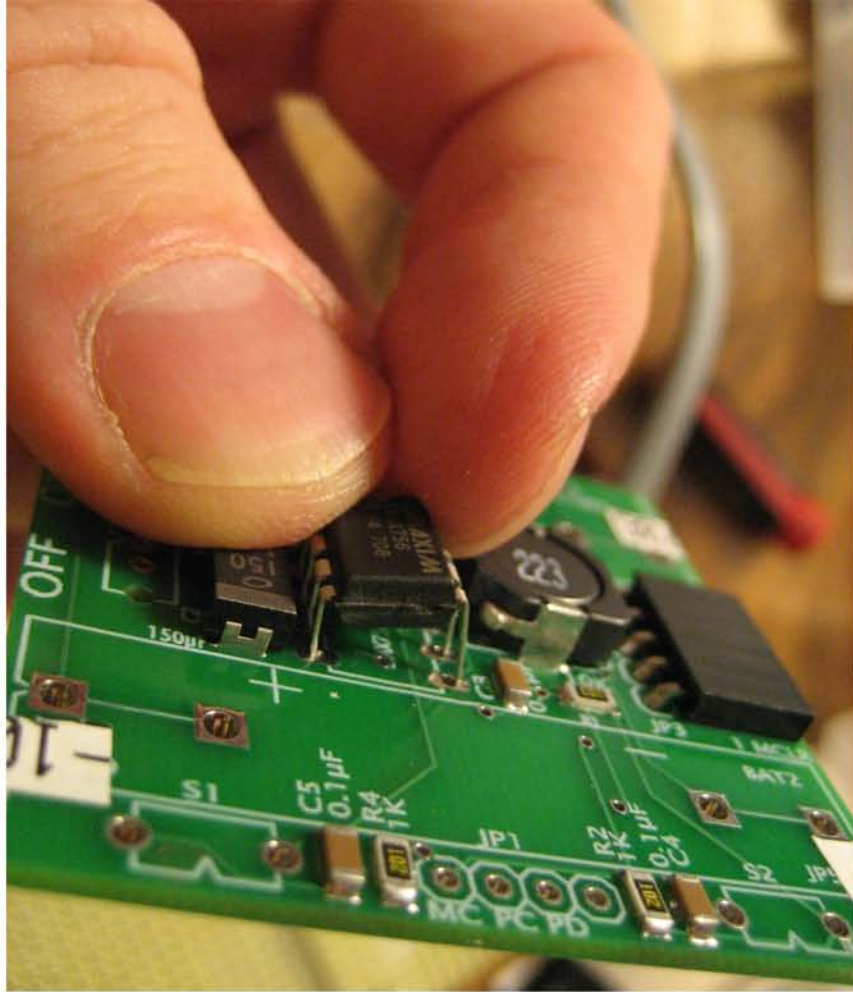
Placing components



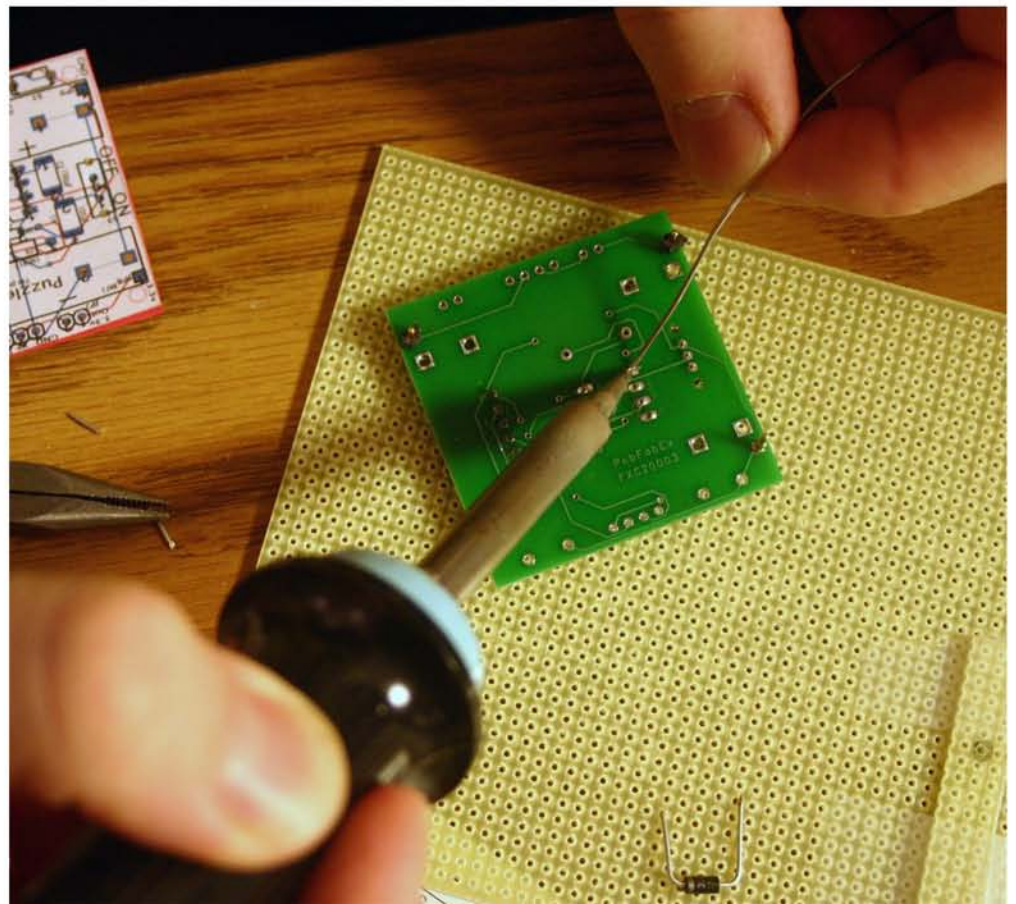


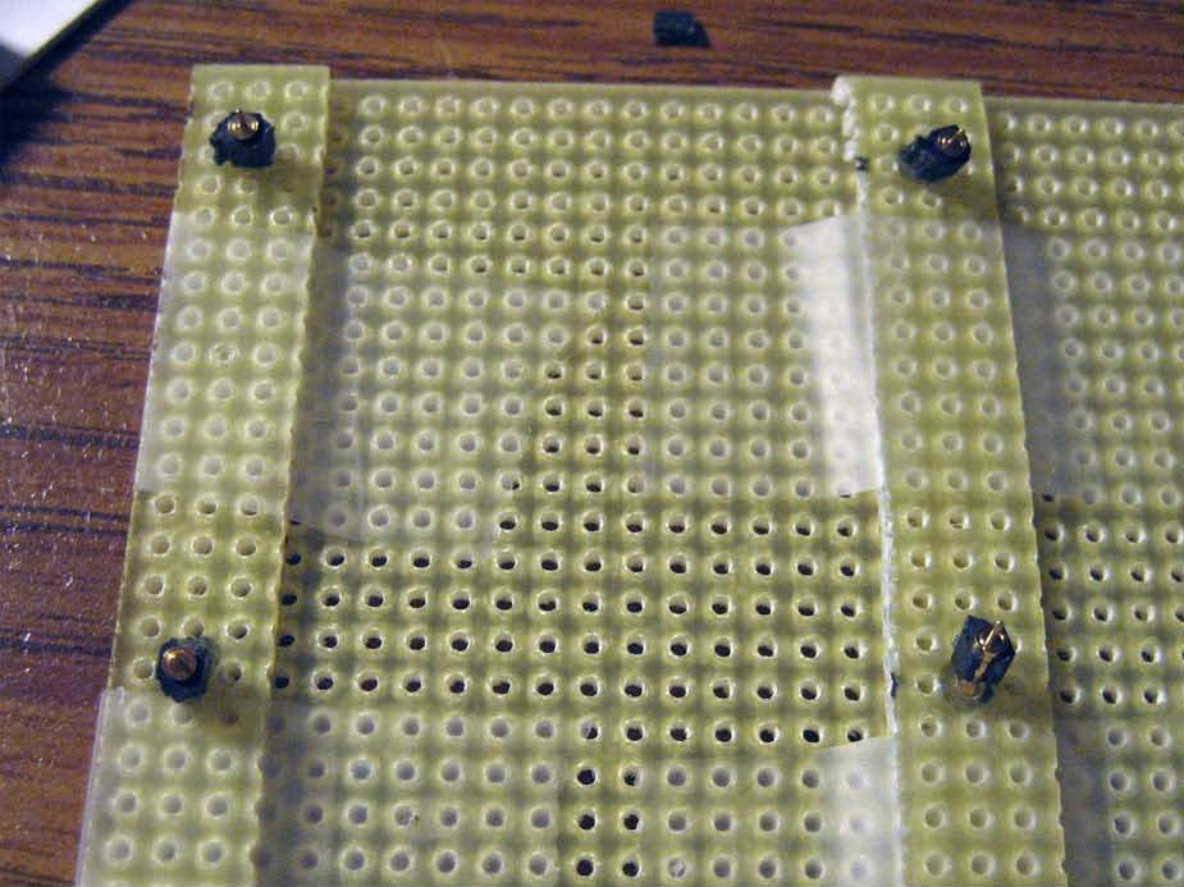
Using an *old* toaster oven to reflow the solder



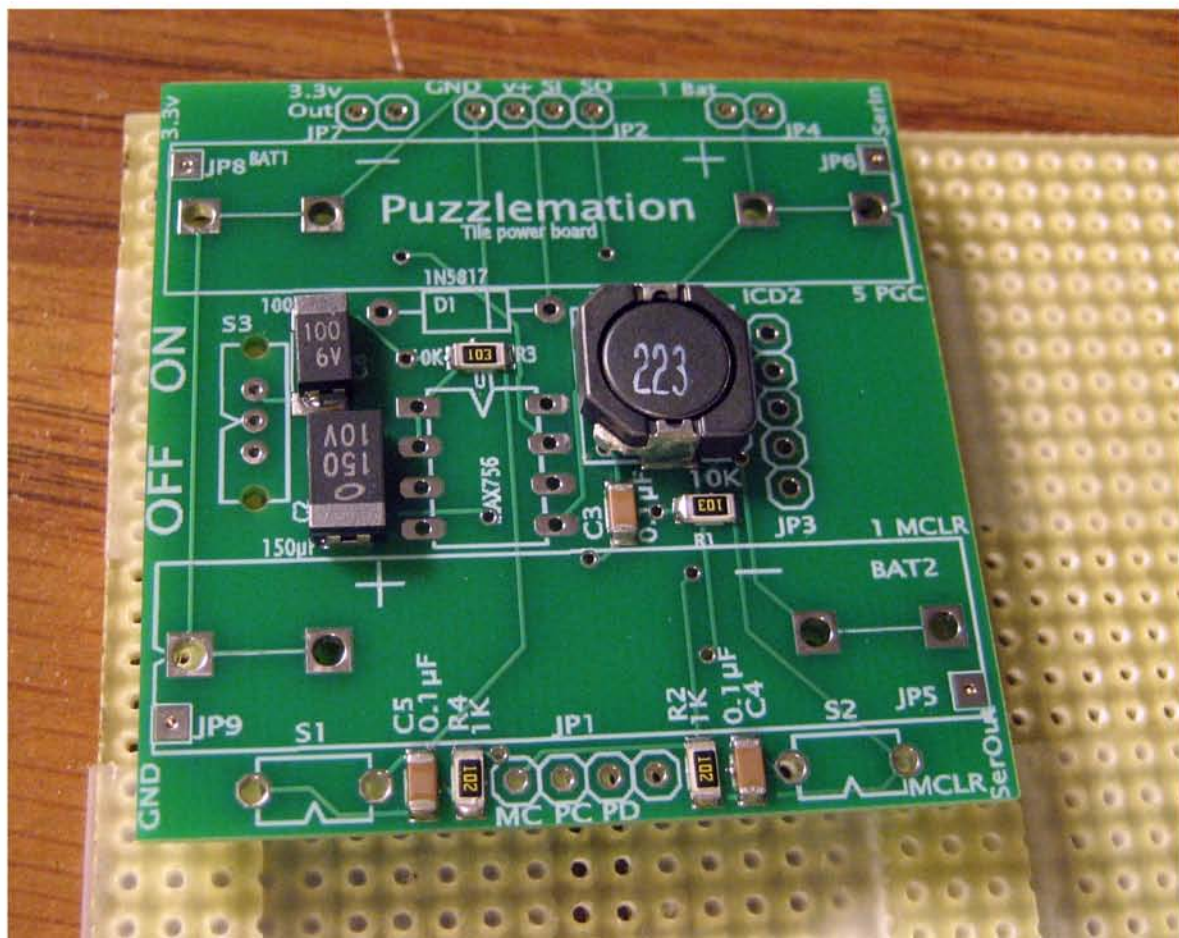


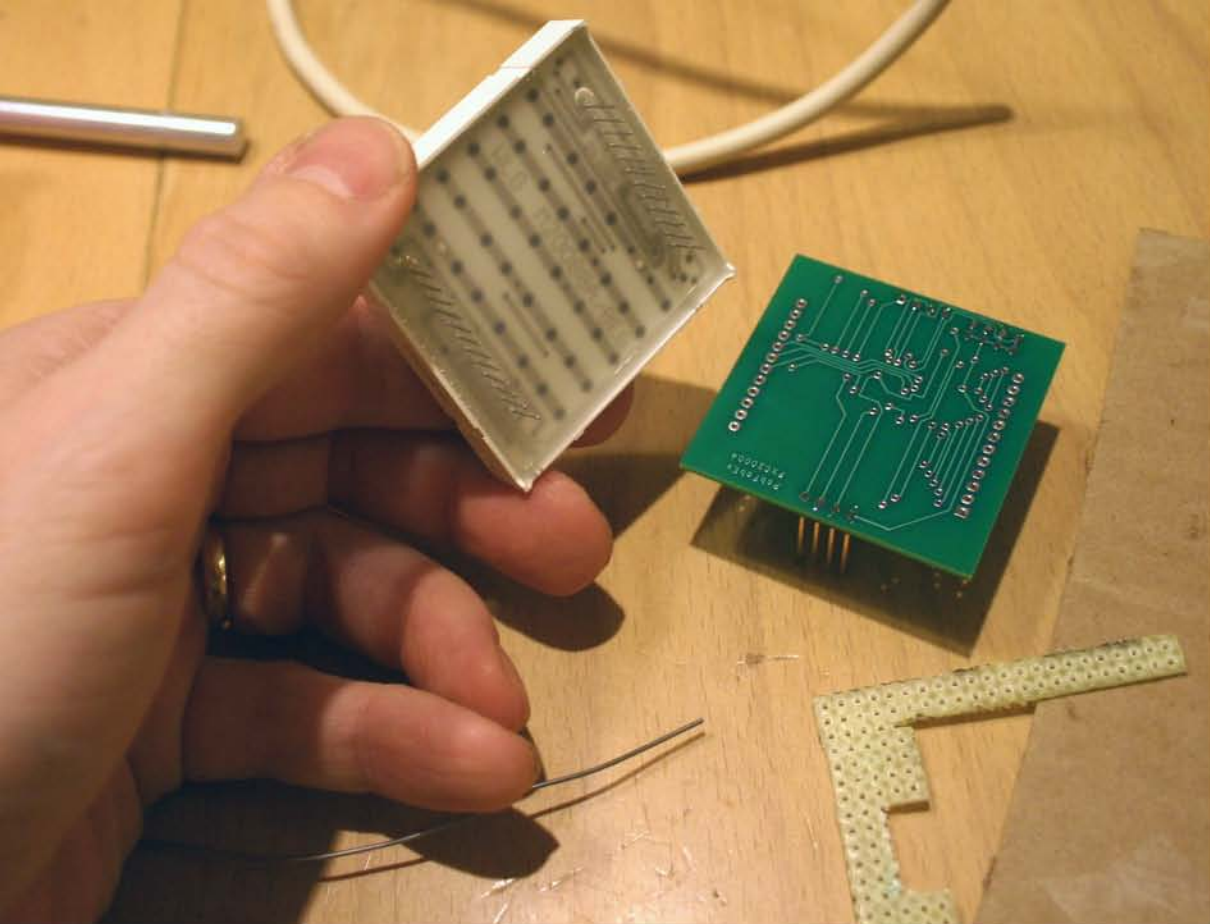
Assembling through-hole components



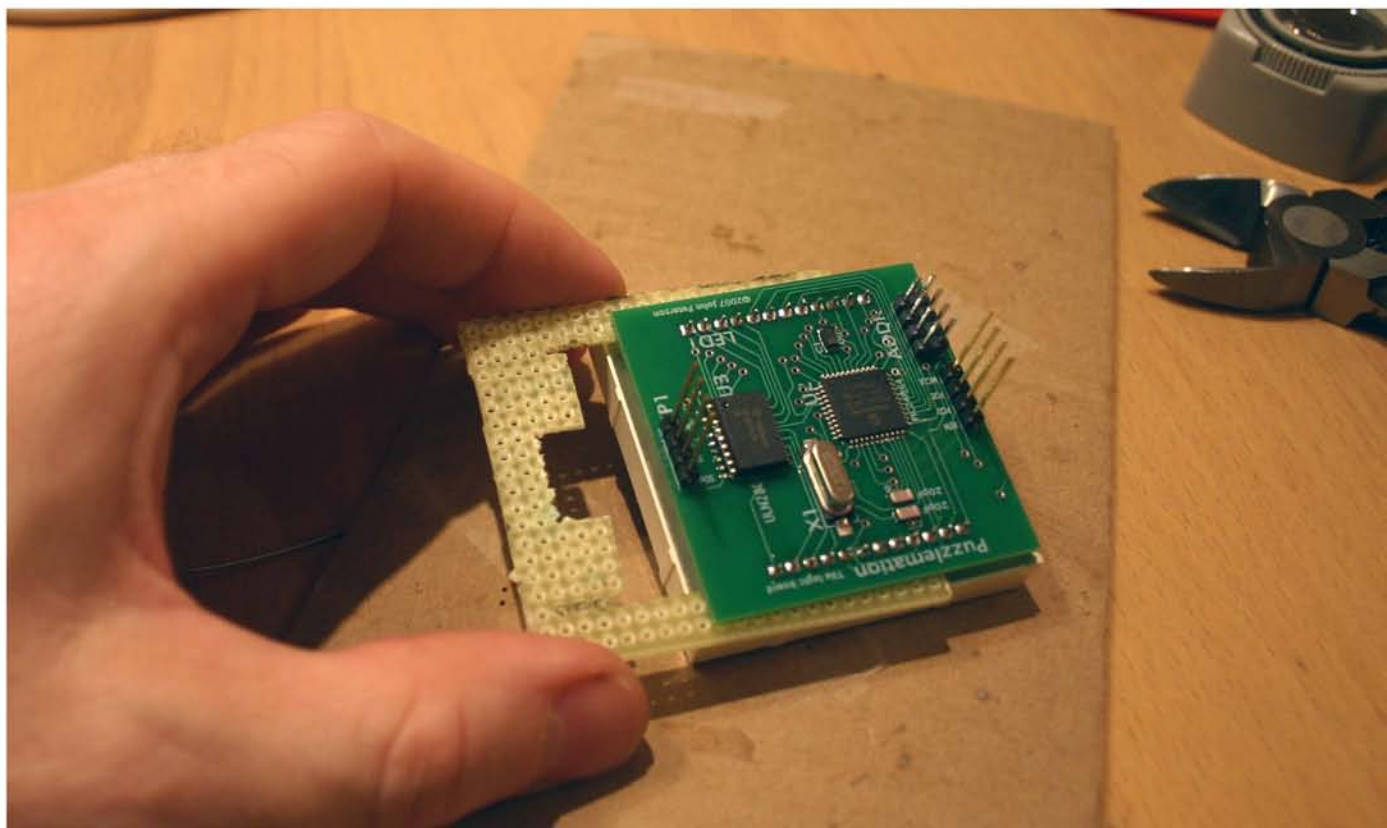


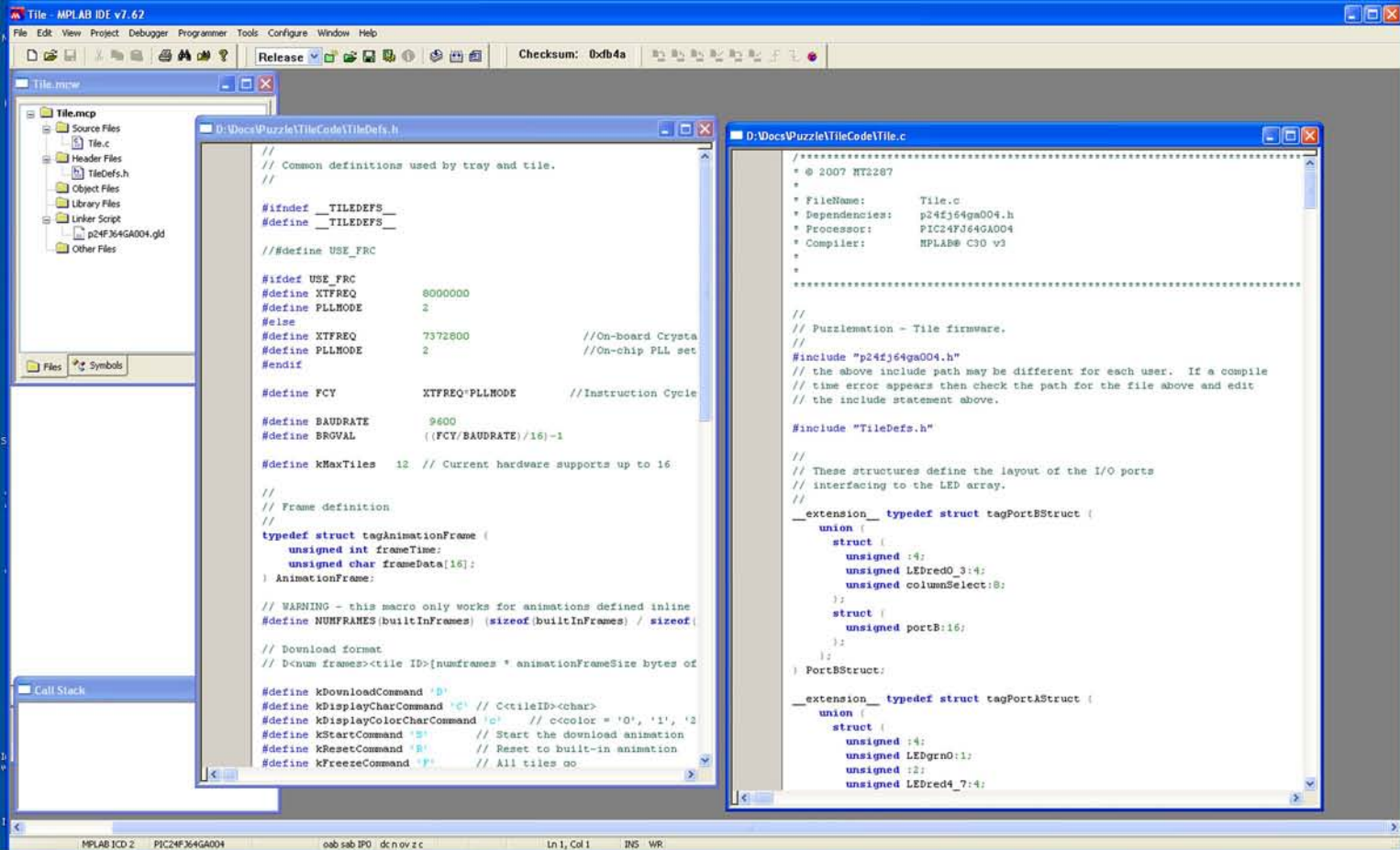
Mounting the contact pins



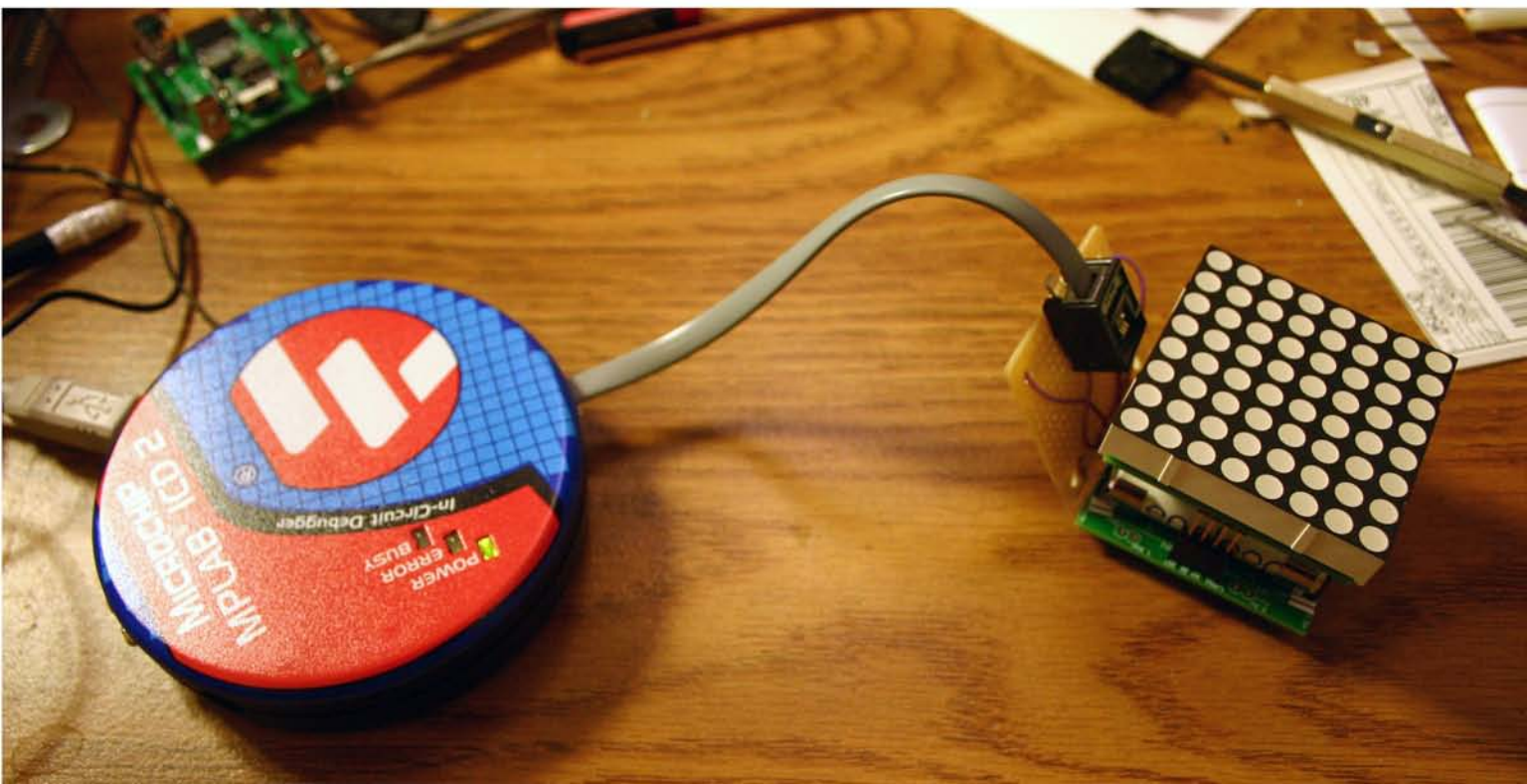


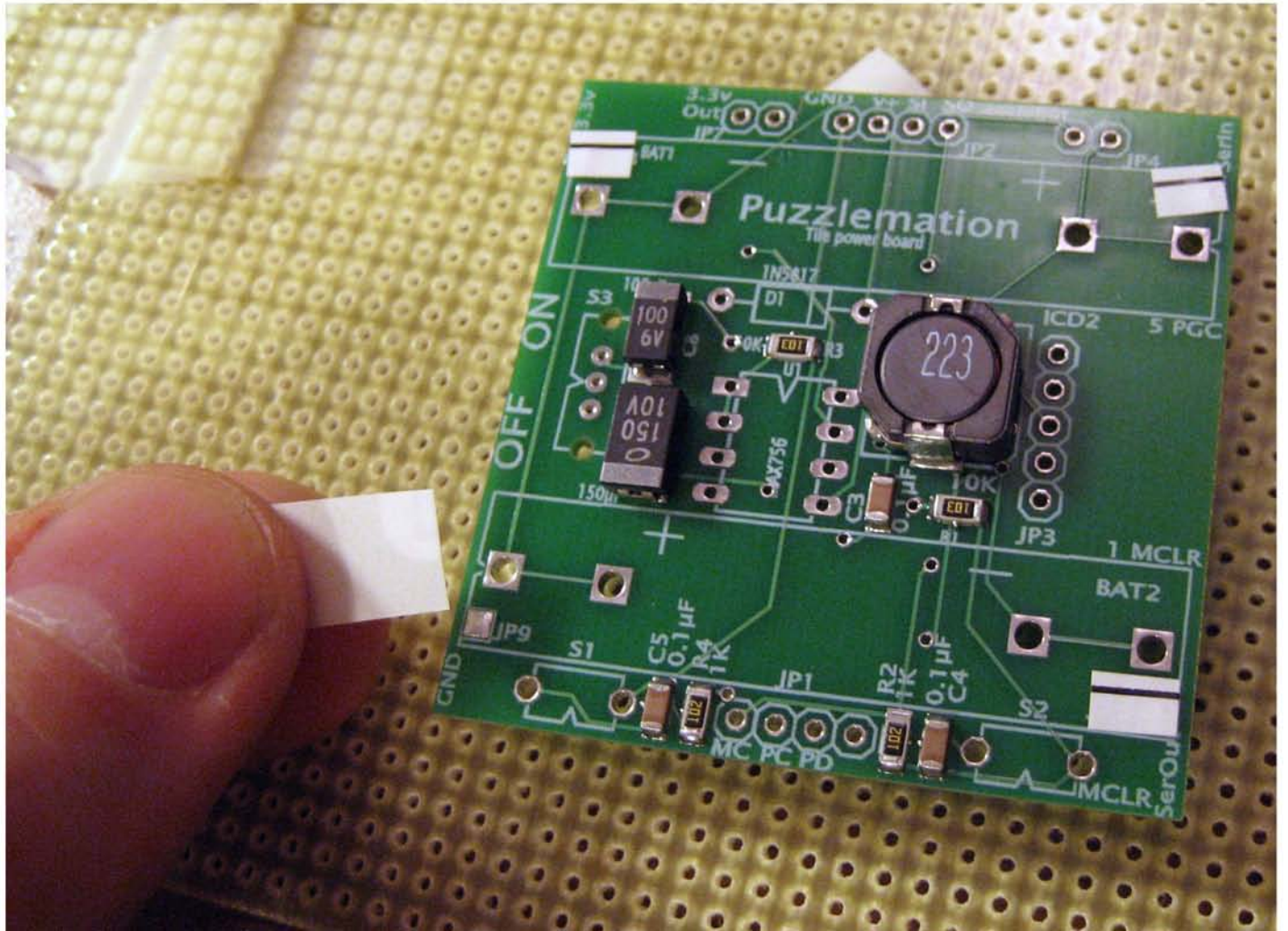
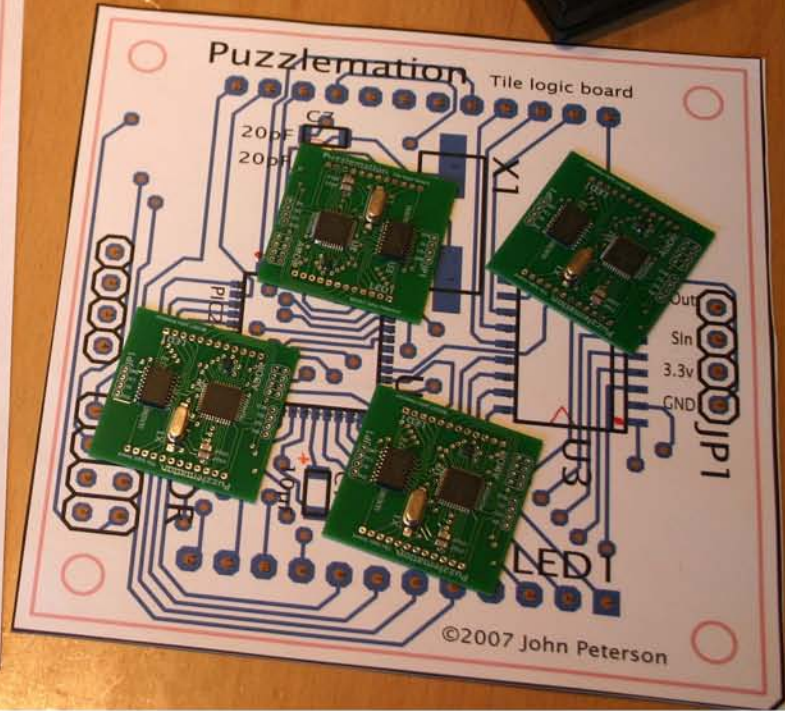
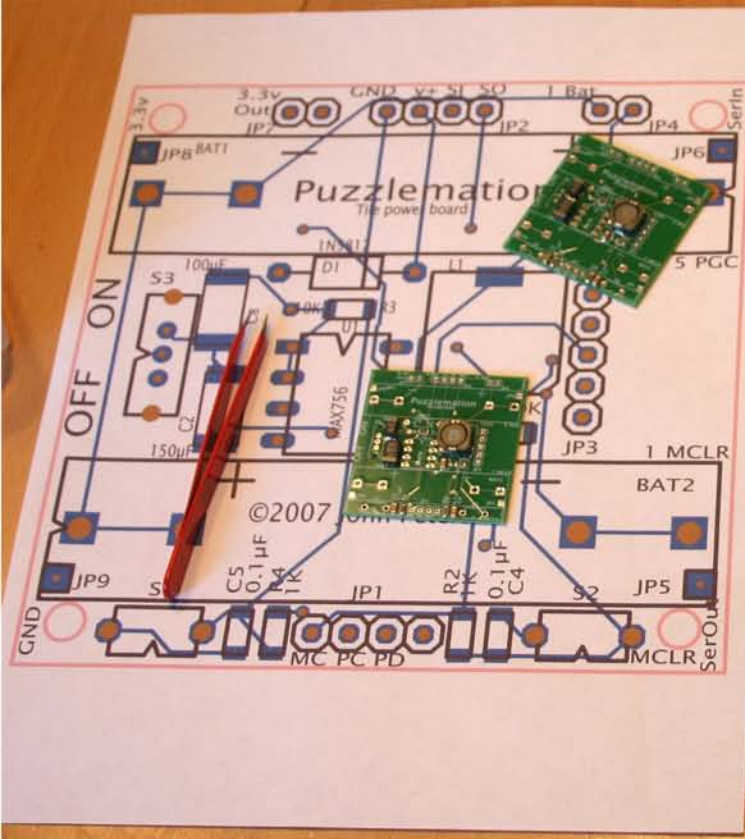
Assembling the LED Matrix display





Programming the Tiles







Creating animations with paper cut-outs



